

Air Diffuser Systems Linear Diffusers Type LDB 12/8/.. LTG System clean®

View of unit



LDB 12/8/1



LDB 12/8/1



LDB 12/8/2



LDB 12/8/3



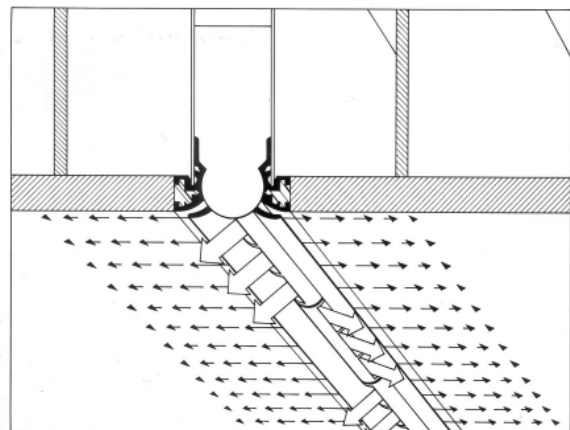
LDB 15

Features

- High induction effect for rapid reduction of speed and temperature differences, thus
 ⇒ high comfort due to low air speeds in the occupied zone.
- Additional ceiling air curtain to reduce pollution on the ceiling in the diffuser area caused by high induction.
- Possibility to adjust diffusers subsequently to optimize the indoor air flow.
- Extremely low-noise with comparatively high flow rate.
- Versatile border options to match many ceiling systems.
- Border profiles for lamp installation available.
- Border profiles in any color (RAL or aluminum colored anodized), cylinders standard in black, white, or grey. Chrome or other surface finishes on request

Function

The clean air supply is split into a large number of individual jets. Additionally, a part of the supply air is diffused directly along the ceiling through a slot in the diffuser border profile. With this air curtain, dust particles from tobacco smoke to textile abrasions are prevented from depositing on the ceiling which considerably reduces the need for frequent repainting or renovation.



Functional principle